

# LED-SB2 Series Area Light

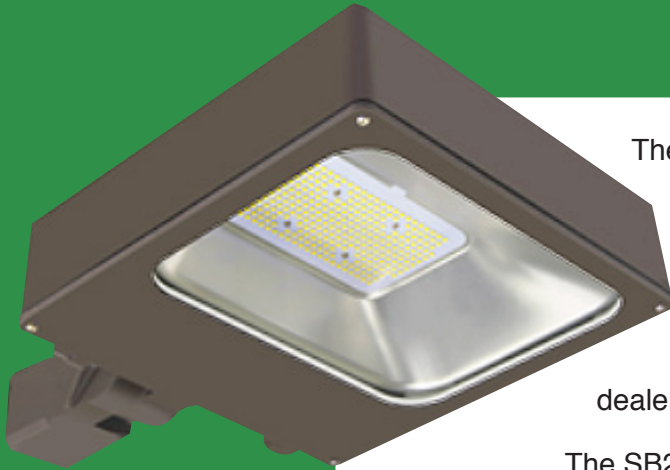
Five models: 65w, 105w, 140w, 210w and 300w

**LED** Conversions, Inc.

50B Northwestern Drive, Suite 10  
Salem, NH 03079

Phone: 603-898-1144

Fax: 603-218-6086



The SB2 Series Area Lights feature super energy efficiency with a high lumen output best suited for outdoor illumination. We offer five models designed to replace 250W, 400W and 1000W metal halide fixtures. They guarantee tremendous energy savings, long life and virtually no maintenance.

These great looking luminaries, in 5 wattages, are perfect for beautifully lighting everything from intimate walkways to auto dealerships, and even large retail and industrial parking lots.

The SB2 Series Area Lights provide many years of energy savings and maintenance free service.

## Features

- Up to 94,000 hours per DOE testing at 130 lumens per watt. (lifetime varies by model)
- 6 Yr. Manufacturers registered warranty
- Maintenance Free
- Return on Investment between 18 and 40 months
- Green Product

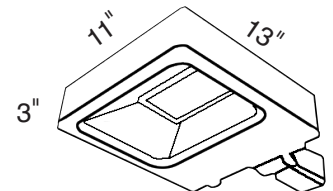
## Environmental

- Contains no Mercury or Lead
- Does not produce UV Rays

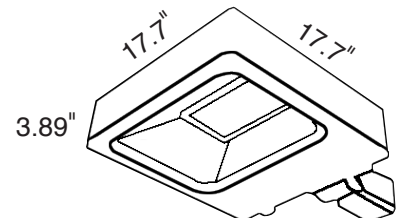
## Specifications

Model	LED-SB2-65	LED-SB2-105	LED-SB2-140	LED-SB2-210	LED-SB2-300
<b>Watts</b>	65w	105w	140w	210w	300w
<b>Input Voltage</b>	100 - 277VAC 347-480 available	100 - 277VAC 347-480 available	100 - 277VAC 347-480 available	100 - 277VAC 347-480 available	100 - 277VAC 347-480 available
<b>Lm Efficacy</b>	130 Lm/W	130 Lm/W	130 Lm/W	130 Lm/W	130 Lm/W
<b>Lm Flux</b>	7,800	13,650	18,200	27,300	39,000
<b>CRI</b>	70+	70+	70+	70+	70+
<b>Color Temp</b>	5000k 4000k available	5000k 4000k available	5000k 4000k available	5000k 4000k available	5000k 4000k available
<b>Beam Angle</b>	Type 3, 5	Type 3, 5	Type 3, 5	Type 3, 5	Type 3, 5
<b>PF / THD</b>	>0.92 / <15%	>0.92 / <15%	>0.92 / <15%	>0.92 / <15%	>0.92 / <15%
<b>L70 Lifetime</b>	100,000H	100,000H	100,000H	100,000H	100,000H
<b>Dimensions</b> (without visor)	13" x 11" x 3"	13" x 11" x 3"	13" x 11" x 3"	17.7" x 17.7" x 3.89"	17.7" x 17.7" x 3.89"

- Environment: Outdoor use
- Operating Temperature: -35°C to +55°C
- IP Rating: IP65
- Finish Color: Bronze
- Housing: Aluminum alloy
- Lens type: Polycarbonate glass
- Available Motion sensing & Photocell
- Mounting options: Straight Pole arm, Slipfitter or Trunion
- Available 0-10V Dimming, Title 24 Compliant
- Warranty: 6 years



SB2-65, SB2-105 and SB2-140



SB2-210 and SB2-300